



The Edging Experts

# DATA SHEET

## Black Jack™

### 4.75 INCH LAWN EDGING WITH A 1 INCH BEAD AND A SINGLE V-LIP WALL ANCHOR

1-800-EDGINGS  
(334-4647)

edgings@olyola.com  
www.olyola.com

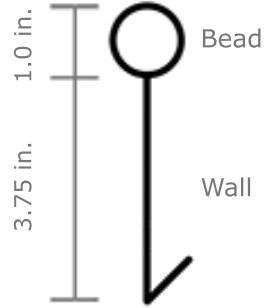
LANDSCAPE EDGING



An alternative to the popular Black Edg-Knight™ style, Black Jack™ is the industry's best single 'v-lip' edging. Without compromising quality, this edging was designed to be slightly smaller, making it a more economical option to help you win those close bids.

Black Jack™ is also available in a boxed and rolled version which includes 4 stakes and 1 crosslock connector. It is ideal for independent retail nursery and garden centers that want to carry a high quality, pre-packaged edging for their customers.

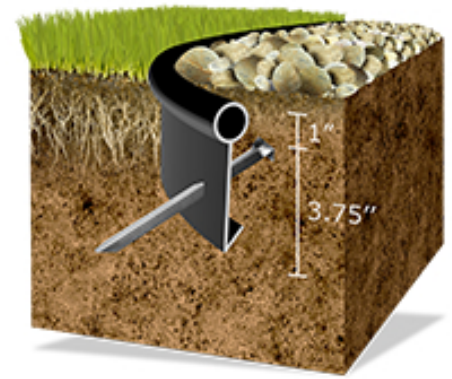
Black Jack™ is made with 100% recycled, high grade polyethylene, without fillers or blown in materials. It is made to last!



Available in 20 and 10 ft. lengths or 20 ft. roll



	SPECIFICATIONS
Packaging:	20 foot - 5 pieces per flat bundle 10 foot - 5 pieces per flat bundle Boxed 20 foot roll (Includes 4 Stakes & 1 Connector)
Material:	Pure medium density polyethylene and 4% carbon black concentrate. Melt factor under 2
Average Wall Thickness:	.07 - .09 inches
Dimensions Per Piece:	Length: 20 ft. Height: 4.75 in.
Features:	1 in. round top bead Single 'v-lip' wall anchor
Can be Formed with Heat:	Yes - heat gun or propane torch (No Contact)
Connection Type:	Jack/Knight Connector (Sold Separately)
Staking:	Through edging wall at 45° angle using nail or Oly-Ola's 9.25 inch stake (Sold Separately)
Approx. Weight:	20 ft. piece: 5.6 lbs.      10 ft. piece: 2.5 lbs. 20 ft. bundle: 28 lbs.      10 ft. bundle: 12.5 lbs. Pack - 6 Rolls: 48 lbs.      Skid - 32 Rolls: 294 lbs.



## Installation Guidelines & Tips

### BASICS

Dig a trench 5 inches deep along the lawn or bed edge. Place the edging in the trench and anchor it with stakes as indicated below. Use only Oly-Ola's exclusive crosslock connector when joining two lengths of edging together and be sure to use the overlap method pictured below.

### STAKING

Pound a stake through the edging wall every 4 feet at a 45 degree angle. The stake should be installed at about the midway point of the wall. Pound the stake through the edging but **be sure to leave at least 2 inches undriven** to allow for resistance on both sides of the wall. Use extra stakes when securing joints and curves. Do not make the mistake of using too few stakes, especially when the ground is exposed to cold temperatures.

### JOINING

Our unique crosslock connector is provided exclusively by Oly-Ola with our roundtop style edgings, except Trim-Line™. The fit of this connector can be adjusted by rotating it. When looking at the connector's end, it appears as a '+'. Inserted into the edging as a plus sign, this will give it a tighter fit. Rotate the plug 45 degrees and insert the plug as an 'X' and you will get a slightly looser fit.



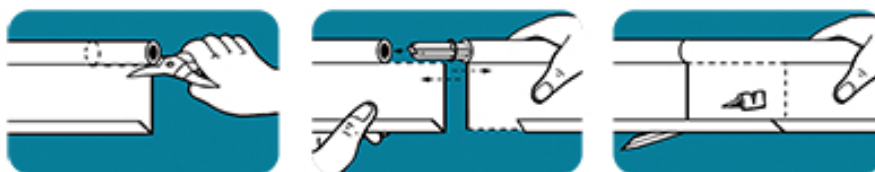
CONNECTOR:  
CROSSLOCK

The Black Jack™ connector is not universal. Be sure to verify that the product stamp says 'Jack' before attempting to use with this edging.



\* Avoid weak and unsightly joints by using the overlap method, and by using Oly-Ola's specifically engineered crosslock connector.

### OVERLAP METHOD (FOR JOINING LENGTHS): Guard Against Gapping & Frost Heave



1. Cut off a 4" section of the round bead on one of the edging pieces and a 4" section of the v-lip on the other piece with a metal snip, utility knife or saw.

2. Use our exclusive crosslock connector to join the two sections, while overlapping the two pieces of edging.

3. Drive 1 or 2 steel anchoring stakes through both sections at a 45 degree angle toward the turf or outside portion of the bed.

Oly-Ola's 9.25 in. Non-bending Steel Stake

Discover  
THE OLY-OLA  
EDGE