



The Edging Experts

DATA SHEET

TRIM-LINE™

4.75 INCH LAWN EDGING WITH A .5 INCH BEAD AND A SINGLE V-LIP WALL ANCHOR

1-800-EDGINGS
(334-4647)

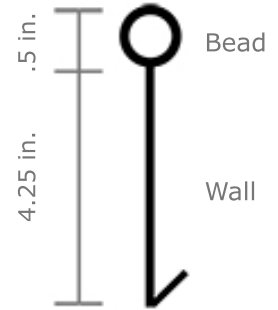
edgings@olyola.com
www.olyola.com

LANDSCAPE EDGING



The solution for the landscaper who desires a profile smaller than the traditional round top. Trim-Line™ features a single 'v-lip' wall anchor and its half inch round top bead makes for a less visible bed divider. It is our smallest round top style and the perfect combination of traditional and low-profile.

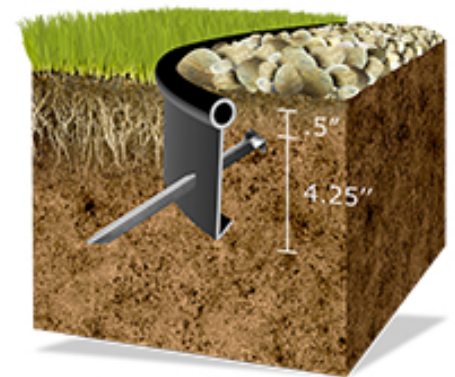
And, as with all Oly-Ola landscape edgings, Trim-Line™ is made with 100% recycled, high grade polyethylene, without fillers or blown in materials. It is made to last!



Available in 20 and 10 ft. lengths



	SPECIFICATIONS
Packaging:	20 foot - 5 pieces per flat bundle 10 foot - 5 pieces per flat bundle
Material:	Pure medium density polyethylene and 4% carbon black concentrate. Melt factor under 2
Average Wall Thickness:	.08 - .09 inches
Dimensions Per Piece:	Length: 20 ft. Height: 4.75 in.
Features:	.5 in. round top bead Single 'v-lip' wall anchor
Can be Formed with Heat:	Yes - heat gun or propane torch (<i>No Contact</i>)
Connection Type:	Tube Insert (<i>Sold Separately</i>)
Staking:	Through edging wall at 45° angle using nail or Oly-Ola's 9.25 inch stake (<i>Sold Separately</i>)
Approx. Weight:	20 ft. piece: 4.8 lbs. 10 ft. piece: 4 lbs. 20 ft. bundle: 24 lbs. 10 ft. bundle: 20 lbs.



Installation Guidelines & Tips

BASICS

Dig a trench 5 inches deep along the lawn or bed edge. Place the edging in the trench and anchor it with stakes as indicated above. Use a tube insert (with adhesive) when joining two lengths of edging together and be sure to use the overlap method pictured below.

STAKING

Pound a stake through the edging wall every 4 feet at a 45 degree angle. The stake should be installed at about the midway point of the wall. Pound the stake through the edging but **be sure to leave at least 2 inches undriven** to allow for resistance on both sides of the wall. Use extra stakes when securing joints and curves. Do not make the mistake of using too few stakes, especially when the ground is exposed to cold temperatures.

JOINING

Use the overlap method detailed below. A polyethylene approved adhesive can be used for a permanent hold. We recommend Bondit B-45TH by Reltek.



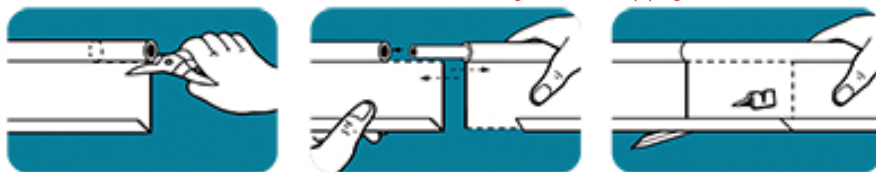
CONNECTOR:
TUBE INSERT

For connecting Trim-Line™ together, tube inserts are provided that can be fixed in place using a poly approved adhesive or small screws.



* Avoid weak and unsightly joints by using the overlap method, and by using a poly approved adhesive or fastener to secure the tube insert.

OVERLAP METHOD (FOR JOINING LENGTHS): Guard Against Gapping & Frost Heave



1. Cut off a 4 inch section of the round bead on one of the edging pieces and a 4 inch section of the v-lip on the other piece with a metal snip, utility knife or saw.

2. Use a tube insert to join the two sections, while overlapping the two pieces of edging.

3. Drive 1 or 2 steel anchoring stakes through both sections at a 45 degree angle toward the turf or outside portion of the bed.

Oly-Ola's 9.25 in. Non-bending Steel Stake

Discover
THE OLY-OLA
EDGE