

Black Edg-Knight™

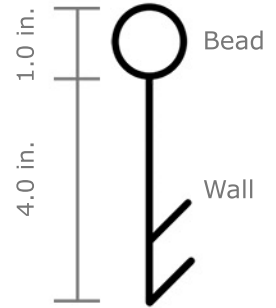
LANDSCAPE EDGING

5 INCH LAWN EDGING WITH A 1 INCH BEAD AND A DOUBLE V-LIP WALL ANCHOR



Created in the likeness of Edg-King™, this similarly thick cousin is designed with a double v-lip anchoring wall; therefore, preventing frost heave better than any other v-lip style. Since Black Edg-Knight™ achieves the same great results as its predecessor, choosing between the two basically comes down to personal taste.

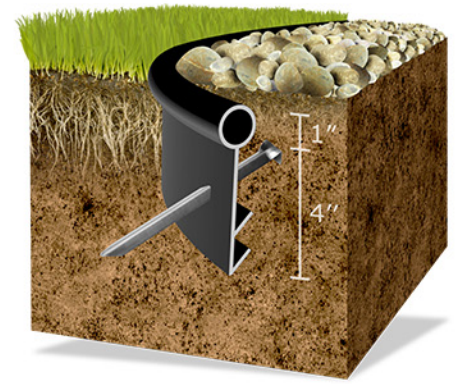
Black Edg-Knight™ is made with high grade, recycled polyethylene, with no fillers or blown in material. It is made to last!



Available in 20 ft. lengths



	SPECIFICATIONS
Packaging:	20 foot - 5 pieces per flat bundle
Each Piece Includes:	Edging, 4 non-bending stakes and 1 crosslock connector
Material:	Pure medium density polyethylene and 4% carbon black concentrate. Melt factor under 2
Average Wall Thickness:	.09 - .105 inches
Dimensions Per Piece:	Length: 20 ft. Height: 5 in.
Features:	1 in. round top bead Double 'v-lip' wall anchor
Connection Type:	Jack/Knight Connector - Use Overlap Method
Can be Formed with Heat:	Yes - heat gun or propane torch (no contact)
Approx. Weight:	20 ft. piece: 6.8 lbs. 20 ft. bundle: 34 lbs.



Installation Guidelines & Tips

BASICS

Dig a trench 5 inches deep along the lawn or bed edge. Place the edging in the trench and anchor it with stakes as indicated below. Use only Oly-Ola's exclusive crosslock connector when joining two lengths of edging together and be sure to use the overlap method pictured below.

STAKING

Pound a stake through the edging wall every 4 feet at a 45 degree angle. The stake should be installed at about the midway point of the wall. Pound the stake through the edging but **be sure to leave at least 2 inches undriven** to allow for resistance on both sides of the wall. Use extra stakes when securing joints and curves. Do not make the mistake of using too few stakes, especially when the ground is exposed to cold temperatures.

JOINING

Our unique crosslock connector is provided exclusively by Oly-Ola with our roundtop style edgings, except Trim-Line™. The fit of this connector can be adjusted by rotating it. When looking at the connector's end, it appears as a '+'. Inserted into the edging as a plus sign, this will give it a tighter fit. Rotate the plug 45 degrees and insert the plug as an 'X' and you will get a slightly looser fit.

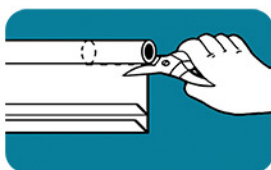


The Black Edg-Knight™ connector is not universal. Be sure to verify that the product stamp says 'Jack' before attempting to use with this edging.

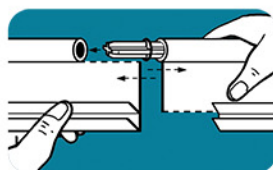


▪ Avoid weak and unsightly joints by using the overlap method, and by using Oly-Ola's specifically engineered crosslock connector.

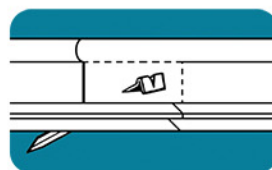
OVERLAP METHOD (FOR JOINING LENGTHS): Guard Against Gapping & Frost Heave



1. Cut off a 4" section of the round bead on one of the edging pieces and a 4" section of both v-lips on the other piece with a metal snip, utility knife or saw.



2. Use our exclusive crosslock connector to join the two sections, while overlapping the two pieces of edging.



3. Drive 1 or 2 steel anchoring stakes through both sections at a 45 degree angle toward the turf or outside portion of the bed.

Oly-Ola's 9.25 in. Non-bending Steel Stake

Discover
THE OLY-OLA
EDGE